

## **BUS STOPS**

Andes.....Hogan's General Store  
Arkville.....Laundromat  
Bloomville.....Post Office  
Bovina Center.....Presbyterian Church  
Davenport.....Quickway  
Davenport Center.....Town Hall  
Delhi.....Ace Hardware  
Delhi Senior Housing  
Fleischmanns.....Village Parking Lot  
Grand Gorge.....Senior Apartments ♣  
Halcottsville.....Fire Hall  
Harpersfield.....Town Hall  
Hobart.....Hobart Activity Center  
Margaretville.....Sunoco Fast Stop ♣  
Roxbury.....Roxbury Convenience Store  
South Kortright.....Post Office  
Stamford.....Village Hall ♣  
Tops  
West Davenport.....Post Office  
♣ *Designated Rest Stops*

## **\*HOLIDAYS\***

The office is always closed on the following holidays. Please contact the office at least a week in advance for any schedule changes.

~ *New Year's Day*      ~ *Columbus Day*  
~ *Presidents' Day*      ~ *Veterans' Day*  
~ *Memorial Day*      ~ *Thanksgiving Day*  
~ *Independence Day*      ~ *Christmas Day*  
~ *Labor Day*

## **\*DESTINATION STOPS\***

### **Oneonta:**

Walmart, Southside, Hannaford's,  
Downtown, Price Chopper

### **Kingston:**

Walmart, and Hudson Valley Mall

The Delaware County Senior Transportation System is designed to cover the main routes that pass through Delaware County. Reservations are required in order to ride the bus at this time. Reservations should be made by 1:00pm the day before desired trip. New passengers should contact Office for the Aging at 607-832-5750 at least 24 hours in advance.

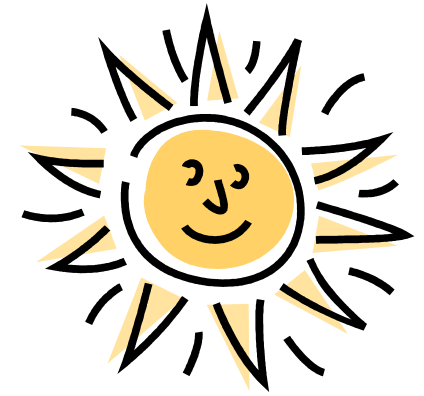
Although the system serves primarily persons 60 years of age and older, we will transport persons with disabilities (age 18 or older) on a space available basis. Persons having difficulty in getting to the designated bus stops should call our office and we will see if an alternate location can be arranged.

## **SUGGESTED CONTRIBUTION - \$5**

All contributions are confidential and voluntary and will be used to expand services to all who need them in Delaware County. Those with a self-declared income at or above 185% of the Federal Poverty line are encouraged to contribute the actual cost of \$15 per round trip. However, no one will be denied this service due to inability or unwillingness to contribute. We are grateful for your support.

Please be advised that utilizing the bus system for transportation to medical appointments cannot be accommodated at this time due to COVID-19 restrictions and our resulting current bus schedule. However, our office does have a separate program to handle requests for medically related transportation and your request will automatically be redirected to that program for assistance.

The Delaware County Senior Transportation System is operated by the Delaware County Office for the Aging with funds from the Federal Administration on Aging, New York State Office for the Aging, Delaware County Government, and the Delaware County Senior Council



# *Delaware County Senior Transportation*

## Eastern Schedule

**\*Please note: New policies are still in effect due to current COVID mandates\***

**Delaware County  
Office for the Aging  
97 Main Street, Suite #2  
Delhi, NY 13753  
(607) 832-5750**

website:  
[www.co.delaware.ny.us/departments/ofa/ofa.htm](http://www.co.delaware.ny.us/departments/ofa/ofa.htm)  
email:  
[ofa@co.delaware.ny.us](mailto:ofa@co.delaware.ny.us)

**DUE TO STATE AND FEDERAL REGULATIONS, REGARDING SOCIAL DISTANCING AND CURRENT COVID MANDATES STILL IN EFFECT FROM THE COVID-19 PANDEMIC, THE FOLLOWING POLICIES HAVE BEEN ADOPTED UNTIL THESE RESTRICTIONS HAVE BEEN FULLY LIFTED:**

- **All riders and bus driver will be required to wear a mask at all times while on the bus, this includes when boarding and getting off the bus.** Drivers will have extra masks for those riders not equipped with one when boarding. **No rider will be allowed on the bus without a mask!**
- There is a temporary **cap of eight riders per trip** (*more will be allowed if transporting households of two who can sit in one bench seat together*).
- To make sure OFA can serve all who rely on this service, riders may be limited to riding only once or twice per month depending on the demand for this service. Therefore, **confirmed reservations will be required ONE DAY IN ADVANCE in order to ride the bus.** If you do not have a confirmed reservation to ride, you will not be allowed on the bus.
- Requests for next day trips must be made by 1pm the day before.
- To help protect you and other riders - if you are feeling ill, experiencing any symptoms of COVID, or are on quarantine due to COVID exposure/ illness on the day you are to ride, then please cancel your trip. We can reschedule you to another week when you are feeling better.

**1ST, 3RD, & 5TH THURSDAYS**

~ Oneonta ~

**PICK UP**

8:15 am ..... Bovina  
 8:20 am ..... Andes  
 8:40 am ..... Margaretville ❖  
 8:45 am ..... Arkville  
 ◆ ..... (Fleischmanns)  
 8:55 am ..... Halcottsville  
 9:05 am ..... Roxbury  
 9:15 am ..... Grand Gorge ❖  
 9:30 am ..... Stamford ❖  
 9:40 am ..... Harpersfield  
 9:50 am ..... Davenport  
 9:55 am ..... Davenport Center  
 10:00 am ..... West Davenport

Arrive Oneonta ~ 10:10 am

Leave Oneonta ~ 12:10 pm

**RETURN**

12:20 pm ..... West Davenport  
 12:25 pm ..... Davenport Center  
 12:30 pm ..... Davenport  
 12:40 pm ..... Harpersfield  
 12:50 pm ..... Stamford ❖  
 1:05 pm ..... Grand Gorge ❖  
 1:20 pm ..... Roxbury  
 1:30 pm ..... Halcottsville  
 ◆ ..... (Fleischmanns)  
 1:40 pm ..... Arkville  
 1:45 pm ..... Margaretville\*  
 2:05 pm ..... Andes  
 2:10 pm ..... Bovina

**2ND & 4TH THURSDAY ~ Kingston ~**

**PICK UP**

8:05 am ..... Delhi  
 8:15 am ..... Bloomville  
 8:25 am ..... South Kortright  
 8:30 am ..... Hobart  
 8:35 am ..... Stamford ❖  
 8:50 am ..... Grand Gorge ❖  
 9:05 am ..... Roxbury  
 9:15 am ..... Halcottsville  
 9:25 am ..... Margaretville ❖  
 9:25 am ..... Arkville  
 9:30 am ..... Fleischmanns  
 9:35 am ..... Pine Hill

Arrive Kingston ~ 10:30 am

Leave Kingston ~ 12:30 pm

**RETURN**

1:30 pm ..... Pine Hill  
 1:35 pm ..... Fleischmanns  
 1:40 pm ..... Arkville  
 1:40 pm ..... Margaretville ❖  
 1:50 pm ..... Halcottsville  
 2:00 pm ..... Roxbury  
 2:10 pm ..... Grand Gorge ❖  
 2:25 pm ..... Stamford ❖  
 2:30 pm ..... Hobart  
 2:35 pm ..... South Kortright  
 2:45 pm ..... Bloomville  
 3:00 pm ..... Delhi

❖ = Designated Rest Stops

◆ = Add 10-20 min. to times following stops at these locations

**\*\* Limit 5 bags per rider \*\***

**\*\*Riders will be called the day before trips to confirm their reservation. \*\*All times listed (or given at confirmation call) are approximate and may change depending on ridership and weather. However, please still be ready for the given pick up time to minimize any delays as much as possible. Thank you**