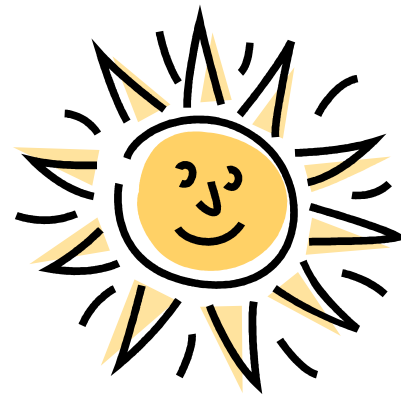




Delaware County Senior Transportation

Eastern Schedule



Delaware County
Office for the Aging
97 Main Street, Suite #2
Delhi, NY 13753
(607) 832-5750

website:
www.co.delaware.ny.us/departments/ofa/ofa.htm

email:
ofa@co.delaware.ny.us

The Delaware County Senior Transportation System is operated by the Delaware County Office for the Aging with funds from the Federal Administration on Aging, New York State Office for the Aging, Delaware County Government and the Delaware County Senior Council.

{!:\data\wp\Receptionist\BUS\BUS SCHEDULE-Eastern 2019.docx}

Revised: 7/18/2019

The Delaware County Senior Transportation System is designed to cover the main routes that pass through Delaware County. We recommend that new passengers contact Office for the Aging at 607-832-5750 at least 24 hours in advance.

Although the system serves primarily persons 60 years of age and older, we will transport persons with disabilities (age 18 or older) on a space available basis. Persons having difficulty in getting to the designated bus stops should call our office and we will see if an alternate location can be arranged.

Starting June 1, 2012, the Delaware County Senior Transportation System expanded all Oneonta bus stops to include stops for medical services in Oneonta.

People wishing to use the bus system to get to medical appointments at any of our destinations may do so. **Any appointments should be scheduled to start at least a half hour after the scheduled arrival time for the destination. All appointments should be completed in time for final departure.**

Please call our office for more information and to reserve a seat on the bus. If the purpose of the trip is for a medical appointment, please note that at the time of reservation.

The office is always closed on the following holidays:

New Year's Day	Columbus Day
Presidents' Day	Veterans' Day
Memorial Day	Thanksgiving Day
Independence Day	Christmas Day
Labor Day	

To check on any schedule changes due to these holidays, please contact the office at least a week in advance.

Suggested Contribution - \$5

All contributions are confidential and voluntary and will be used to expand services to all who need them in Delaware County. Those with a self-declared income at or above 185% of the Federal Poverty line are encouraged to contribute the actual cost of \$15 per round trip. However, no one will be denied this service due to inability or unwillingness to contribute. We are grateful for your support.

For any questions regarding contributions, please call the Office for the Aging Director at 607-832-5750.



