

DCAP

Facts

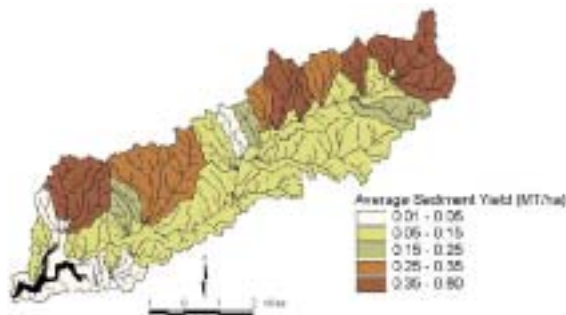
Delaware County Action Plan

Modeling

Purpose

To assist Delaware County and Watershed partners:

- Assess the causes and effects of existing and possible future land uses on the hydrology and phosphorus loadings delivered to the Cannonsville Reservoir;
- Identify and explain cost-effective management options to reduce the loadings of phosphorus to the reservoir; and
- Evaluate the results of implemented management practices on water quality.



Method

After testing and critical review the USDA Soil and Water Assessment Tool (SWAT) model was adopted for use as the most effective tool for the above purposes.

Progress and Results to Date

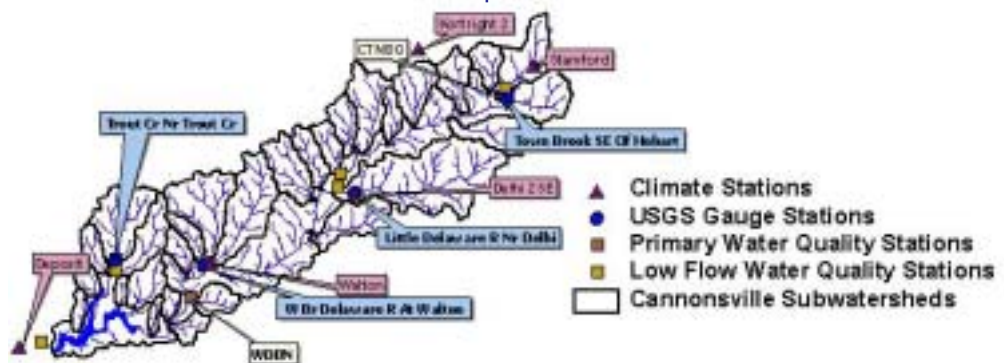
The Cornell team has calibrated and validated SWAT for hydrology, sediment and phosphorus. Results show that:

- The spatially distributed modeling provided by SWAT can provide a validated scientific basis for identifying and evaluating management options that vary spatially and temporally in the basin;
- SWAT can integrate the substantial data and scientific knowledge available and facilitates critical analyses of the operation of the system; and
- SWAT advances the transfer of understanding and knowledge to the decision makers and other concerned with phosphorus in the Cannonsville Reservoir Basin.

Project Administered By

- Christine A. Shoemaker, Ripley Professor of Engineering, Cornell University
- Keith S. Porter, Director, NYS Water Resources Institute
- Steven Pacenka, Water Specialist, NYS Water Resources Institute

Project under the auspices of the Board of Supervisors of Delaware County, with guidance provided by its Inter-agency Delaware County Scientific Support Group.



Delaware County Action Plan

Department of Watershed Affairs •• 97 Main Street •• Delhi, NY 13753

Telephone: 607-746-8914 •• Email: h2o@co.delaware.ny.us •• Web site: www.co.delaware.ny.us/depts/h2o/

DCAP is a collaborative partnership with the NYS Water Resources Institute, the Catskill Watershed Corporation, the Watershed Agricultural Council, the NYC Department of Environmental Protection, state and federal watershed partners.

The Plan comprehensively addresses all significant nonpoint contaminant sources in the Cannonsville Basin to meet water quality objectives.

For more information on DCAP contact the Delaware County Department of Watershed Affairs.



Cannonsville Reservoir Basin Delaware County, New York

